



Annual Report 2005



• Our vision

The International Student Exchange Program (ISEP) is a key component of the international profile of member institutions.

Members cooperate as equal partners in a spirit of trust and mutual support to offer high-quality programs and further the internationalization of their campuses, collectively achieving goals beyond their individual reach.

ISEP reciprocal exchanges and study abroad programs enable students to experience intellectual and personal growth through immersion in another culture.

I come from rural North Carolina, so living in the downtown area of such a large capital city as Buenos Aires for a full year was truly a unique and priceless experience. My next step is the Peace Corps, and I leave in a couple months.

*Justin Peele, 2004-2005
Appalachian State University, USA
to Universidad del Salvador, Argentina*



● From the Chair



ver the last several years, I have enjoyed the privilege of serving as a member and subsequently as Chairman of the ISEP Board of Directors. During this time, I have seen remarkable changes and growth that have positioned our organization as a world leader in international educational exchange.



The ISEP network continues to grow to meet the needs and interests of our expanding membership. The wide range of study opportunities and experiences available through ISEP ensures that we continue to respond to the increasing necessity for incorporating an international study experience into higher education. As a participant in the University Presidents Summit on Higher Education hosted by the Secretaries of State and Education in Washington, D.C. in January 2006, I can underscore the value of ISEP as a key provider for access to international education both in the United States and abroad. Our commitment to providing affordable programs and services of the highest quality remains deep and unwavering.

As demands for access to international education continue to grow, we must look for new ideas and approaches to sustain our commitment to access and diversity. I urge you to review this report and to share with us your comments and suggestions for strengthening our organization. By working together, we can and will sustain a strong and stable organization for many years to come. I look forward to hearing from you.

George M. Dennison
President, The University of Montana
Chairman, ISEP Board of Directors

ISEP events:

- » April 2005 – Study Tour, Sweden
- » May 2005 – Coordinators Luncheon Meeting during NAFSA conference, Seattle, Washington
- » October 2005 – Pre-Symposium Site Visit Tour, Southern France
- » October 2005 – All Member Symposium, Milan, Italy
- » May 2006 – Dessert reception during NAFSA conference, Montréal, Canada
- » November 2006 – ISEP Biennial Conference, Washington, D.C.
- » May 2007 – Event during NAFSA conference, Minneapolis, Minnesota
- » Fall 2007 – All Member Symposium

The ISEP experience is a “real-world” experience. ISEP participants are integrated into the host

• From the President

A

n important component of higher education today is the integration of a global perspective into the learning experience. Students need to develop skills and competencies to live and work successfully in our increasingly multi-cultural environment.

International learning experiences are no longer a luxury nor should they be limited by a student's economic or social background. Rather, international education should begin at an early age, be well integrated into all aspects of education and be an established part of the higher education degree for all students.



Study outside the home country is the most valuable tool for gaining cross-cultural skills and new perspectives on one's discipline and on the home culture. For over 26 years, ISEP has provided thousands of students with an opportunity to study outside their home country. Our commitment to access, diversity and affordability in international exchange and study abroad is the hallmark of our growing network. ISEP programs provide in-depth learning opportunities in a wide range of countries. In addition, ISEP strengthens the international profile of member campuses by bringing highly qualified students from other countries into the classroom.

The fiscal year ending June 30, 2005, was marked by substantial growth in membership and in all program areas. The network grew by nearly 20 new members including universities in the United States, Europe, Asia, Latin America and the South Pacific, marking our commitment to ensuring access to all areas of the world. In addition, ISEP continues to celebrate our growing stability after becoming an independent self-supporting non-profit organization. The ISEP network of more than 268 universities demonstrates that remarkable results can be achieved through collaboration, cooperation, mutual support and a shared commitment to excellence in international education and exchange.

A handwritten signature in black ink that reads "Mary Anne Grant". The signature is fluid and cursive.

Mary Anne Grant
President, ISEP



ISEP provides both an affordable means for our students to study in non-traditional cultures overseas and a wonderful way for the college to further enrich the cultural diversity of our student body here on campus. Everybody wins big!

Hendrix College, USA

• The ISEP experience

The steadily growing participation in ISEP programs by international and U.S. students reflect the value and success of international educational exchange and study abroad. Numbers, however, do not tell the whole story. Increasingly, international educators are focusing on quality issues and differentiating among programs according to goals and outcomes.

At the October 2005 ISEP Member Symposium in Milan, delegates from 22 countries discussed the ISEP student experience. Participants in ISEP exchange and study abroad programs gain understanding of the international perspectives of their major field, broaden their curricular and professional horizons by taking courses not available at their home institutions, and learn how to study and succeed in a different educational system. Symposium delegates agreed, however, that the most significant outcomes of the ISEP experience are the intercultural competence and personal maturity that students achieve.

Intercultural competence involves a complex set of attitudes (respect for other cultures and for the value of cultural diversity, openness to and curiosity about other cultures, tolerance for ambiguity and uncertainty), skills (the ability to observe, analyze, and understand other cultures as well as one's own) and behaviors (ability to adapt to different cultural environments, flexibility in selecting and using appropriate communication styles). This set of attributes--according to a Rand Corporation study, *New Challenges for International Leadership* (2003) --is among the top five predictors of a successful career in an international organization along with general cognitive skills, interpersonal skills, self-reliance, and the ability to adapt. In order to stimulate the development of these qualities, the study recommends that higher education "promote and recognize real world study abroad."

The ISEP experience is very much a "real-world" experience. ISEP students are integrated into the host institution and host culture as fully as their language competence and non-degree student status allow. They take courses taught to native students in the host-country language wherever possible. In countries where the language is one not commonly taught, students take classes taught in English with local students that are seeking to gain professional fluency in English and with students from other countries, thus adding multiple international perspectives to their academic experience. Those that study a foreign language abroad recognize the boost to their fluency that using the language in everyday life outside the classroom gives. More than 95% of ISEP students study abroad for a semester or a full year. These relatively longer experiences provide in-depth learning for greater acquisition of intercultural skills.

Host institutions provide orientation and support that take into account the background and expectations of incoming students while facilitating their integration into the local environment. Accessing the support becomes part of the cultural learning experience for students—a challenge at times but also a means of personal growth. Meeting their host culture on its own terms, ISEP participants achieve not only intercultural competence but self reliance, interpersonal skills and flexibility as they prepare for their future as global citizens.



Studying abroad is crucial to learning and becoming fluent in a foreign language. It forces you to wake up speaking the language, to think in the language, and to do everything speaking the foreign language.

Maria Elena Martin del Campo, Spring 2005
San Diego State University, USA to Università Cattolica del Sacro Cuore, Italy

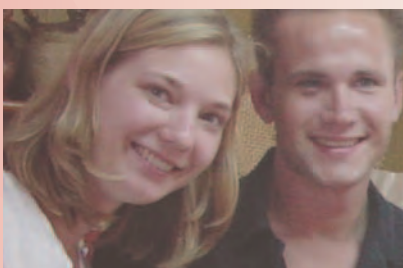


Intellectual & personal



The **isep** experience

growth in another culture



I really loved that I was treated as a non-exchange student but rather as a student of Finland. I loved ISEP!

Samantha Dramstad, 2004-2005
North Dakota State University, USA
to Åbo Akademi University, Finland

Programs & services

1 Who we are

ISEP is a network of 268 post-secondary institutions in the United States and 36 other countries cooperating to provide affordable international educational experiences for a diverse student population.

Participating students:

- Are as fully integrated into their host institution as their length of stay and language skills permit.
- Develop intercultural competence and personal maturity through immersion in another culture.
- Gain understanding of the international dimensions of their academic field.

2 ISEP Members

ISEP members adhere to standards of membership that facilitate students' integration into the host institution and host culture as well as transfer of academic credit to the home institution.

ISEP Programs

ISEP offers access to education abroad for students from member and affiliate institutions through:

- **Reciprocal Exchanges** which are open to all members; each outbound participant pays the cost of an

academic term (tuition, room, and board) at home while, for every student sent abroad, the institution receives one.

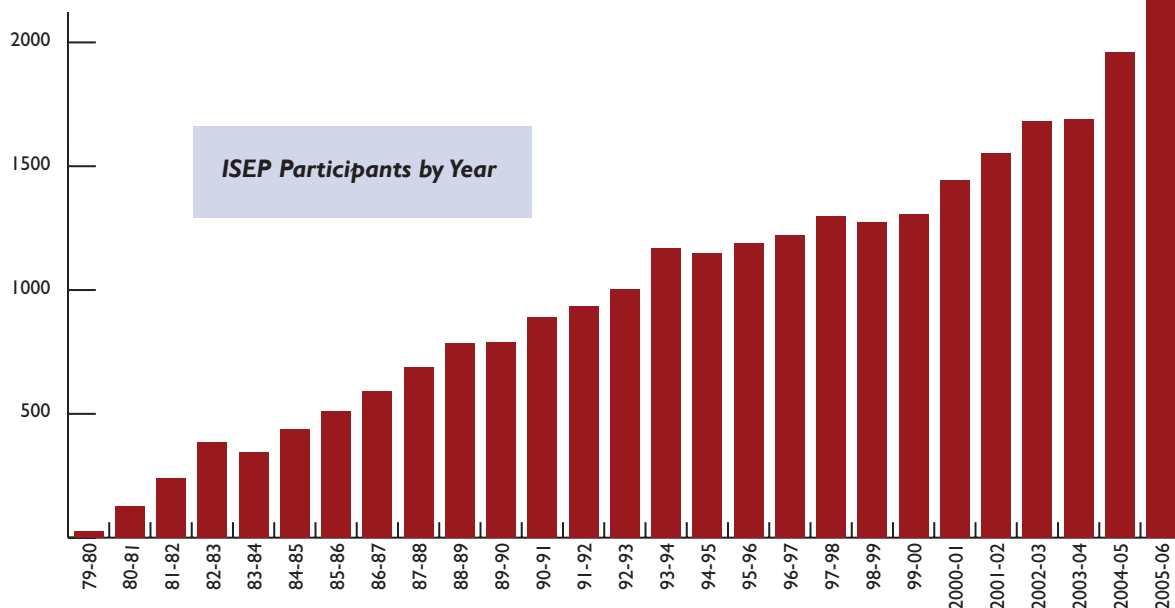
ISEP facilitates exchanges between U.S. and international members as well as exchanges among international institutions.

• ISEP-Direct fee-paid study-abroad programs

which are open to all members and affiliates; participants pay a fee to ISEP, which covers the host institution's program cost.

4 Benefits of ISEP Membership

- Access to a wide range of institutions of higher education without the necessity of negotiating and maintaining individual agreements.
- Placements are available in all academic disciplines; institutions can send students to study in one field and receive participants in another field.
- Incoming international students bring cultural and linguistic diversity to the campus and international perspectives to the curriculum.
- Because exchange participants pay the program fee to their home institutions, tuition fees stay at home, and enrollment figures are constant.





Members

U.S. ISEP Members

as of December 2005

Alaska

University of Alaska Southeast

Arkansas

Hendrix College

California

California State University—Bakersfield
California State University—East Bay
Chapman University
University of the Pacific
San Diego State University
San José State University

Colorado

University of Denver
University of Northern Colorado

Connecticut

Western Connecticut State University

District of Columbia

Howard University

Florida

Eckerd College

Georgia

Agnes Scott College
Berry College
University of System of Georgia Consortium:
- Armstrong Atlantic State University
- Columbus State University
- Georgia College & State University
- Kennesaw State University
- North Georgia College & State University
- University of West Georgia
- Valdosta State University

Idaho

Idaho State University
University of Idaho

Illinois

Elmhurst College
Monmouth College
North Park University
Northern Illinois University
Roosevelt University
Southern Illinois University—
Carbondale

Indiana

Ball State University
Butler University
Indiana State University
University of Southern Indiana

Iowa

Iowa State University of Science
and Technology
University of Iowa

Kansas

Emporia State University
Fort Hays State University
Kansas State University
University of Kansas
Wichita State University

Kentucky

Bellarmine University
University of Kentucky

Louisiana

Louisiana State University
Loyola University New Orleans
Northwestern State University
of Louisiana

Maine

Saint Joseph's College of Maine

Maryland

Frostburg State University
Towson University

Massachusetts

Hampshire College

Michigan

Central Michigan University

Minnesota

Hamline University
Minnesota State University Moorhead

Mississippi

Jackson State University
University of Mississippi

Missouri

Missouri Southern State University
Missouri Consortium:
- Central Missouri State University
- Northwest Missouri State University
Missouri State University
Truman State University

Montana

Montana State University
Rocky Mountain College
University of Montana

Nebraska

Creighton University
University of Nebraska at Kearney
University of Nebraska—Lincoln
Nebraska Wesleyan University

New Jersey

New Jersey Consortium:
- Montclair State University
- Rowan University
- The College of New Jersey
- William Paterson University
Saint Peter's College

New Mexico

New Mexico State University

New York

St. Lawrence University

North Carolina

Mars Hill College
North Carolina Consortium:
- Appalachian State University
- East Carolina University
- North Carolina Agricultural & Technical
State University
- North Carolina State University, Raleigh
- University of North Carolina at
Asheville
- University of North Carolina, Charlotte
- University of North Carolina,
Greensboro
- University of North Carolina
at Pembroke
- University of North Carolina—
Wilmington
- Western Carolina University
- Winston-Salem State University

North Dakota

Jamestown College
Minot State University
North Dakota State University

Ohio

John Carroll University
Miami University
Wittenberg University

Oklahoma

University of Tulsa

Oregon

Willamette University

Pennsylvania

Chatham College
Clarion University of Pennsylvania
Indiana University of Pennsylvania
Mansfield University of Pennsylvania
Westminster College

Puerto Rico

University of Puerto Rico—Mayagüez
University of Puerto Rico—Río Piedras

South Carolina

Clemson University

South Dakota

South Dakota State University

Tennessee

East Tennessee State University
Maryville College
University of Memphis
Middle Tennessee State University
Rhodes College
Tennessee State University
Tennessee Technological University
University of Tennessee at Chattanooga
University of Tennessee

Texas

University of North Texas
St. Edward's University
Southwestern University
Texas A&M International University
Texas Lutheran University
University of Texas at El Paso

Utah

University of Utah
Utah State University

Vermont

University of Vermont

Virginia

Old Dominion University
Roanoke College
Virginia Commonwealth University
Virginia Polytechnic Institute & State University

Washington

Central Washington University
Washington State University
Western Washington University
Whitworth College

West Virginia

Marshall University

Wisconsin

Edgewood College
University of Wisconsin—La Crosse

Wyoming

University of Wyoming

International ISEP Members

as of December 2005

ARGENTINA

Universidad Católica de Córdoba ■ ●
Universidad de Palermo ■
Universidad del Salvador ■ ●

AUSTRALIA

Curtin University of Technology ●
Deakin University ●
Macquarie University ●
RMIT University ●
University of Canberra ●
University of Southern Queensland ●

AUSTRIA

Karl-Franzens-Universität Graz ■
Johannes Kepler Universität Linz
Universität Salzburg
Technische Universität Graz ■

BRAZIL

Fundação Armando Álvares Penteado ■
Pontifícia Universidade Católica do Rio de Janeiro ■ ●

BULGARIA

American University in Bulgaria ●

CANADA

Brock University ■
Laurentian University ■ ●
Thompson Rivers University ■

CHILE

Pontifícia Universidad Católica de Valparaíso ■ ●
Universidad Católica del Norte ■
Universidad de Viña del Mar

CHINA

Chinese University of Hong Kong

COLUMBIA

Universidad ICESI

COSTA RICA

Universidad Nacional ●

CZECH REPUBLIC

Masaryk University in Brno ■ ●

DENMARK

Aalborg University

ESTONIA

University of Tartu

FIJI

University of the South Pacific

FINLAND

Åbo/Turku Consortium:
- Åbo Akademi University ■
- Turku School of Economics and Business Administration ■
- University of Turku ■
University of Helsinki ■
Helsinki University of Technology ■
University of Joensuu ■
University of Jyväskylä ■
University of Kuopio ■
Lappeenranta University of Technology ■
University of Oulu ■
University of Tampere ■
Tampere University of Technology ■

FRANCE

Université Paul Cézanne (Aix-Marseille III) ■
AREPIC Consortium—Amiens:
- Université de Picardie Jules Verne
- Groupe Sup de Co Amiens Picardie
Université d'Angers ■
Université des Antilles et de la Guyane
Université de Caen ■
Université de Franche-Comté ■
Université de Grenoble II (Pierre Mendès France) ■
Université du Havre ■
Université de Lille III (Charles de Gaulle) ■
Institut National des Sciences Appliquées (INSA) de Lyon
Université du Maine
Université Paul Valéry (Montpellier III) ■
Université de Nantes
Université de Nice (Sophia Antipolis)
Rennes Consortium:
- Institut d'Etudes Politiques de Rennes ■
- Université de Rennes I ■
- Université de Rennes 2 (Haute-Bretagne) ■
Université de la Réunion
Université de Saint-Etienne (Jean Monnet)
Université de Savoie

■ Participates in Exchanges with Other International Members

● Also available on ISEP-Direct

● Board of Directors

Chair:

Dr. George M. Dennison
President
The University of Montana
USA

Ms. Mary Anne Grant
President
International Student Exchange
Program
USA

Professor Tony Adams
Pro Vice-Chancellor
(International)
Macquarie University
Australia

Dr. Tony Atwater
President
Indiana University of
Pennsylvania
USA

Mr. Al Balkcum, Jr.
Director of the Global
Campus
University of Minnesota
USA

Ms. M. Archer Brown (ret.)
Deputy Executive Director
NAFSA: Association of
International Educators
USA

Dr. Blaine A. Brownell
Interim Dean, College of
Business
University of South Florida
St. Petersburg
USA

Mr. Michel Darmon
Department of Applied Foreign
Languages Chairperson
Université d'Angers
France

**Ms. Nanda (Wijnanda) Maria
Agatha De Bruin-van Veen**
Associate Director International
Leiden University
Worldwide Programs
The Netherlands

Dr. James Gehlhar
Director
Center for International
Education
University of Tennessee
USA

**Dr. Stanley S. Gryskiewicz
(ret.)**
Vice President, Global
Initiatives & Senior Fellow,
Creativity and Innovation
Center for Creative
Leadership
USA

Dr. Kermit L. Hall
President and Professor of
History
University at Albany
State University of New York
USA

Ms. Elizabeth J. Marsala
Organizational Consultant
USA

Dr. Thomas R. Oates
President, Rocky Mountain
College (until October
2005) & Visiting Scholar,
Princeton Theological
Seminary at Princeton
University
USA

Mr. A. E. O'Brien
Consultant
USA

Dr. Richard C. Sutton
Director of International
Programs & Senior Advisor
for Academic Affairs
The University System of
Georgia Board of Regents
USA

● Council of Advisors

Chair:

Ms. Janis Halpern
Coordinator, Academic
Programs Abroad
Indiana State University
USA

Chair-elect:

Mr. Thomas Wu
Director of Academic Links
The Chinese University of
Hong Kong
China

Prof. Gabriele W. Bosley
Director,
International Programs
Chair, Department of
Foreign Languages
Bellarmine University
USA

Mr. Robert Carolin
Assistant Director for
Education Abroad
San Diego State University
USA

Ms. Jane P. Chandler
Coordinator, Academic
Programs Abroad
Louisiana State University
USA

Ms. Marielle de Dardel
Head of International Relations
Université de Fribourg
Switzerland

Ms. Carol Fairweather
Director
Study Abroad Programs
University of Denver
USA

Ms. Tuula Hellstedt
Student Coordinator
University of Helsinki
Finland

Dr. Paul Huntsberger
Assistant Director, Center for
International Programs
New Mexico State University
USA

Ms. Sue M. Jackson
Director
Off-Campus Programs
Whitworth College
USA

Mr. Larry Laffrey
Director for Study Abroad and
International Student Services
Edgewood College
USA

Mr. Kris H. Lou
Director of International
Education and Associate
Professor of International
Studies
Willamette University
USA

**Ms. Brigitte Malinas-
Vaugien**
Assistant Professor, English
Department
Université de Franche-Comté
France

Dr. Edilio Mazzoleni
International Programs
Manager
Università Cattolica del Sacro
Cuore
Italy

**Dr. Rosa Marina de Brito
Meyer**
Associate Vice-President for
Academic Affairs
Pontifícia Universidade
Católica do Rio de Janeiro
Brazil

**Ms. María Jesús Morillas
Álvarez**
Head of the International
Office
Universidad Pública
de Navarra
Spain

Dr. Michele L. Petrucci
Director
Office of International Affairs
Indiana University of Pennsylvania
USA

Mr. Todd Steed
Coordinator for Programs
Abroad Office
University of Tennessee
– Knoxville
USA

Ms. Marja Unkuri-Chaudry
Assistant Director for Study
Abroad
The University of Montana
USA

GERMANY

Universität Bielefeld
Technische Universität Carolo-
Wilhelmina zu Braunschweig
Universität Dortmund ■
Universität Hannover ■
Katholische Universität Eichstätt-
Ingolstadt
Justus-Liebig-Universität Giessen
Philipps-Universität Marburg ■ ●
Universität Trier ■

GHANA

University of Ghana ●

HUNGARY

Budapest University of Technology
and Economics
University of Debrecen

ICELAND

University of Iceland

ITALY

Università Cattolica del Sacro Cuore ■
Università degli Studi di Pavia
Università degli Studi di Trieste
Università degli Studi di Urbino
"Carlo Bo" ●

JAPAN

Chukyo University ■
Kansai Gaidai University ■
Nanzan University ■
Toyo University ●

KOREA

Ajou University ■
Ewha Womans University ■
Keimyung University ■
Korea University ■
Yonsei University ■

LATVIA

University of Latvia

MALTA

University of Malta ●

MEXICO

Universidad de Guanajuato ■
Tecnológico de Monterrey (ITESM)—
Guadalajara, Monterrey, Mazatlán,
Ciudad de Mexico, Querétaro ■
Instituto Tecnológico y de Estudios
Superiores de Occidente (ITESO) ■
Universidad La Salle ■
Universidad de Monterrey (UEM) ■
Universidad Popular Autónoma del
Estado de Puebla (UPAEP) ■
Universidad Regiomontana ■

THE NETHERLANDS

Leiden University ■ ●
Maastricht University
Radboud University Nijmegen
Tilburg University ■
University of Groningen
Universiteit van
Amsterdam
Utrecht University ■
Vrije Universiteit
Amsterdam

NEW ZEALAND

Massey University ●

NICARAGUA

Universidad Americana ■

POLAND

University of Wroclaw ■

SOUTH AFRICA

University of Stellenbosch ■ ●

SPAIN

Universidad Alfonso X el Sabio
Universidad Complutense de Madrid
Universidad de Málaga ■
Universidad de Murcia ●
Universidad Pública de Navarra ■ ●
Universidad de Santiago de Compostela
Universidade de Vigo

SWEDEN

Karlstad University ■
Luleå University of Technology ■
Mälardalen University
Örebro University ■
Södertörns högskola (Southern
Stockholm)
Växjö University ■

SWITZERLAND

Universität Bern ■
Université de Fribourg ■
Université de Lausanne

THAILAND

Thammasat University ■ ●

UNITED KINGDOM

Bournemouth University ■
University of Chester ■ ●
University of Central Lancashire ■ ●
University of Huddersfield
Napier University, Edinburgh ●
University of Plymouth ●
University of Strathclyde ●
University of Sunderland ■ ●
University of Ulster ●



ISEP members cooperate as equal partners in a spirit of trust and mutual support to further the internationalization of their campuses and offer access to high-quality programs in diverse locations.



URUGUAY

Universidad Católica del Uruguay ■ ●

Joining after January 2006:

Ritsumeikan University, JAPAN

ISEP Affiliates

California State University, Fullerton
University of Minnesota
University of Missouri-Columbia
University of Wisconsin-Eau Claire
University of South Carolina
Universidad TecMilenio

■ Participates in Exchanges with
Other International Members

● Also available on ISEP-Direct



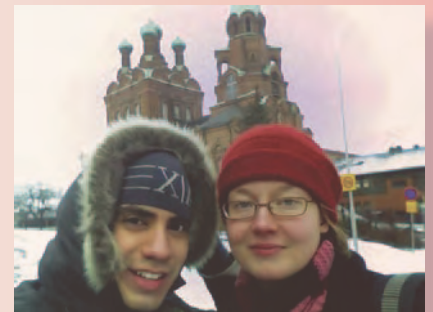
The real memories I will never forget are those I shared with some of the most important Brazilians I met, the children. I learned the value of life over the value of possessions. Through the eyes of children who have nothing, I learned the value that can be placed on important things like family and friends.

Erin Thompson, 2004-2005
Western Washington University, USA to Pontifícia
Universidade Católica do Rio de Janeiro, Brazil



I am more understanding of cultural differences and better able to respect them. Truly, I am very grateful to ISEP for making my year abroad possible.

Jennifer Pecora,
2004-2005 Utah State University, USA
to University of Sunderland, UK



Statement of financial position

ASSETS

	2005	2004
Current assets:		
Cash and cash equivalents	\$942,810	\$681,730
Fees and accounts receivable, net of allowance for bad debts	25,285	161,159
Prepaid expenses	168,106	94,194
Foreign forward exchange contract	(68,046)	(11,173)
Total current assets	1,068,155	925,910
Property and equipment:		
Office furniture and equipment	123,438	92,910
Leasehold improvements	33,267	30,358
Intangibles	69,784	52,419
Total property and equipment	226,489	175,687
Less accumulated depreciation and amortization	128,561	96,279
Net property and equipment	97,928	79,408
Other assets:		
Refundable deposits	11,323	11,323
Foreign currency hedge deposits	145,216	90,854
Total other assets	156,539	102,177
Total assets	\$1,322,622	\$1,107,495

LIABILITIES AND NET ASSETS

Current liabilities:		
Accounts payable, trade	\$121,348	\$287,833
Accrued wages	33,139	25,600
Accrued vacation	53,085	52,215
Payroll related liabilities	7,233	3,286
Deferred service fees	909,400	706,681
Firm commitment	(68,046)	(11,173)
Sublease and student housing deposits	10,000	4,900
Current portion of obligations under capital lease	3,993	—
Total current liabilities	1,070,152	1,069,342
Long-term liabilities:		
Long-term portion of obligations under capital lease	17,844	—
Total long-term liabilities	17,844	—
Total liabilities	1,087,996	1,069,342
Net assets:		
Unrestricted	158,186	12,553
Temporarily restricted	76,440	25,600
Total net assets	234,626	38,153
Total liabilities and net assets	\$1,322,622	\$1,107,495



Statement of activities

REVENUES	Unrestricted	2005 Temporarily restricted	Totals
Program and general:			
Membership fees	\$504,784	\$ —	\$504,784
Participant placement fees	525,014	—	525,014
ISEP direct fees	2,249,457	—	2,249,457
Special program fees	289,215	—	289,215
Other program fees	14,155	—	14,155
Student health insurance fees	493,011	—	493,011
Conference fees	99,936	—	99,936
Contributions	500	—	500
Grant income	—	55,000	55,000
Other income (expense)	1,422	—	1,422
Interest and investment income	8,473	—	8,473
Total program and general	4,185,967	55,000	4,240,967
Net assets released from restrictions: Satisfaction of usage restrictions	4,160	(4,160)	—
Total revenues	4,190,127	50,840	4,240,967
EXPENSES			
Program service expenses:			
ISEP Reciprocal exchange program	991,971	—	991,971
ISEP direct program	2,090,778	—	2,090,778
Special programs	232,560	—	232,560
Conference	112,734	—	112,734
Total program service expenses	3,428,043	—	3,428,043
General and administrative expenses	575,667	—	575,667
Fundraising and development expenses	40,784	—	40,784
Total expenses	4,044,494	—	4,044,494
Change in net assets	145,633	50,840	196,473
Net assets, beginning of year	12,553	25,600	38,153
Net assets, end of year	158,186	76,440	234,626

We highly appreciate the way ISEP manages to keep everybody's interests in mind: the interests of the students as well as the American and non-American institutions.

Radboud University Nijmegen, The Netherlands



ISEP gratefully acknowledges the kind contributions and support from foundations, sponsors, partners and friends:

FOUNDATIONS

Freeman Foundation: ISEP's Asia Pacific Development Initiative

IFSA Foundation: Study Abroad Scholarships for Africa and South America

New York Community Trust-Annette Kade Fund: Scholarships for Student Exchanges between the United States and France and Germany

ISEP SPONSORS

Contiki Holidays

ekit

Global One

ISE Card

STA Travel

ISEP PARTNERS GOLD CONTRIBUTORS

Università Cattolica del Sacro Cuore

Université Paul Cézanne (Aix-Marseille III)

Université de Grenoble II

Université de Savoie

Karlstad University

Luleå University of Technology

Mälardalen University

Örebro University

University College of Southern Stockholm

Växjö University

ALUMNI DEVELOPMENT FUND FRIENDS

Helsinki University of Technology

Indiana State University

Leiden University

University of Joensuu

Macquarie University

The University of Montana

University of Wisconsin-La Crosse

One of the greatest experiences I had was joining the swim team. Coach Kelly was a great coach and person, and he made a real swimmer out of me. I found lots of new friends and I had the great opportunity to learn about another culture, to see another country and to broaden my horizon.

Birgit Lerchner, 2004-2005
Karl-Franzens-Universität Graz, Austria to Hendrix College, USA



Argentina
Australia
Austria
Brazil
Bulgaria
Canada
Chile
China
Costa Rica
Czech Republic
Denmark
Estonia
Fiji
Finland
France
Germany
Ghana
Hungary
Iceland
Italy
Japan
Republic of Korea
Latvia
Malta
Mexico
Netherlands
New Zealand
Nicaragua
Poland
South Africa
Spain
Sweden
Switzerland
Thailand
United Kingdom
United States
Uruguay

•
•
•
•
•
•
•
Hundreds of thoughts come to mind about ISEP; for instance, ISEP breaks down barriers, supports a multicultural experience, enhances our campus and university life, and provides a campus beyond our campus.

Universidad de Murcia, Spain
• • • • • • • • • • • • • • • •



There are not enough words to describe what my experience as an ISEP student has been. I have become a more mature, open-minded, responsible, outgoing and confident person.

Samantha Dramstad, 2004-2005
North Dakota State University, USA
to Åbo Akademi University, Finland

Going abroad has definitely been the best decision I have ever made. Wherever you end up going, exciting big city or small town, it will always be a great experience because you meet amazing people everywhere, and because it is your experience, the experience of a lifetime.

Audrey Estienney, 2004-2005
Université de Franche-Comté, France to
New Mexico State University, USA



1616 P Street NW, Suite 150
Washington, DC 20036
ph: 202-667-8027
fx: 202-667-7801

www.isep.org